

S.W. 1/4

51-3

SECTION 10, T.5N.,R.2W., S.L.B.&M.

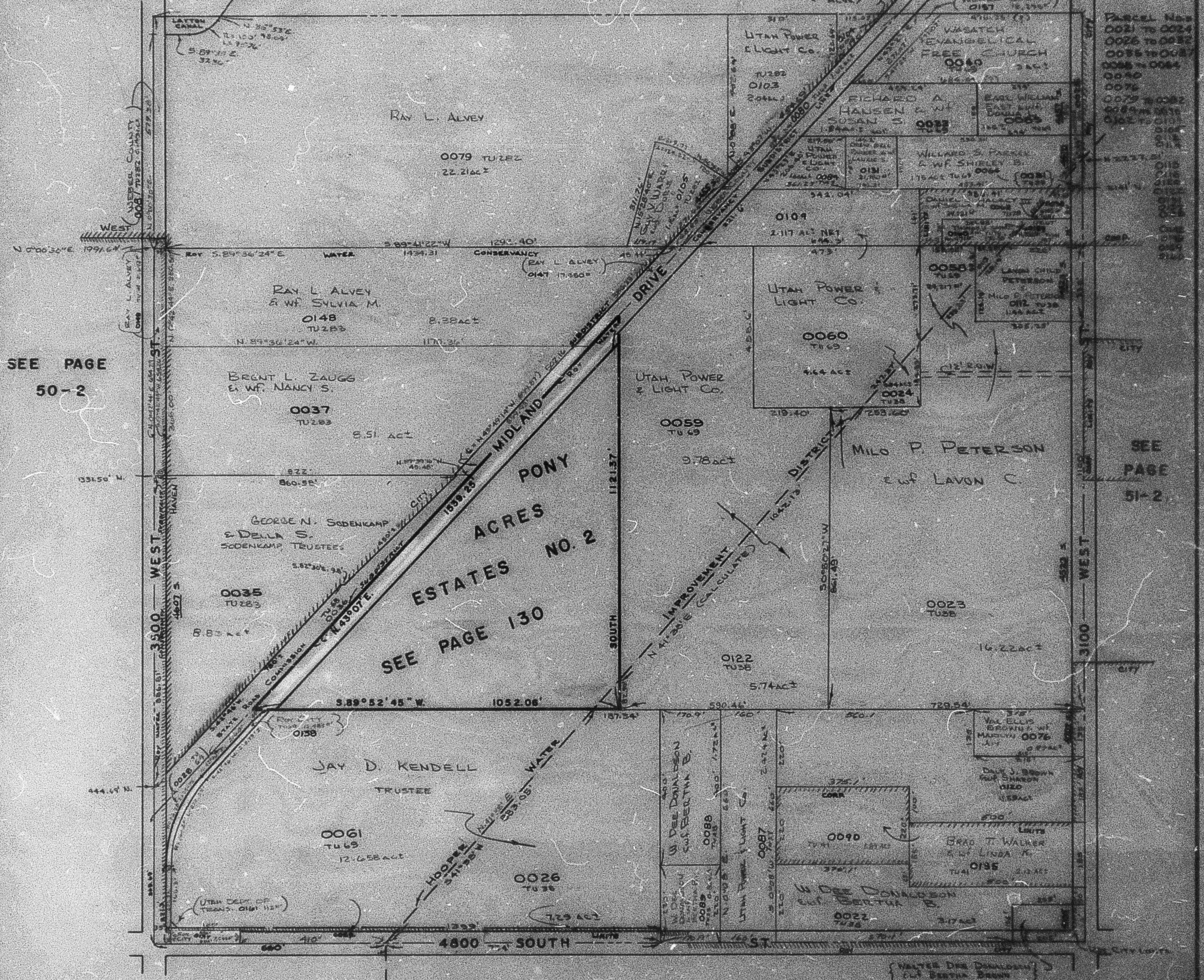
IN ROY CITY, WEST HAVEN CITY & WEBER COUNTY

SCALE 1" = 200'

SEE PAGE 51-4

PREFIX: 08-051

TAXING UNITS: 38, 41, 69, 282, 283



SEE PAGE
50-2

SEE
PAGE
51-2

SEE BOOK 9 PAGE 71